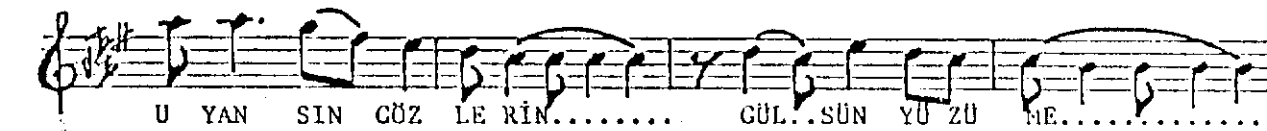
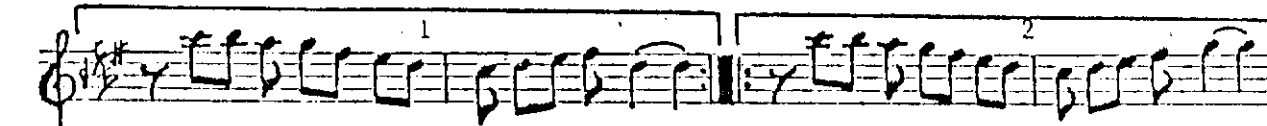
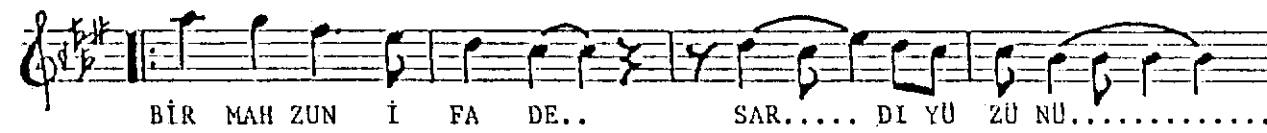


♩ : 160



AKŞAMIN GÜLGESİ İNERKEN SUYA
DALGIN BAKIŞLARIN DALDI UYKUYA
BİR MAHZUN İFADE SARDI YÜZÜNÜ
BİLLİ Kİ GÖRDÜĞÜN BİR DÜŞ, BİR RÜYA

O GÜZEL BAŞINI DAYA GÜÇSÜME
SICICAK ELLERİN DEĞSİN ELİME
UYANSIN GÖZLERİN CÜLSÜN YÜZÜME
BELLİ Kİ GÖRDÜĞÜN BİR DÜŞ, BİR RÜYA